

# Online Energy Monitoring Solution

**m2mL**  **LOGGER**®  
remote monitoring eco-system



# Integrated Energy management solution



Successful energy management starts with **integrated monitoring.**

### Benefits

- ✔ Bring down operational costs
- ✔ Monitoring equipment efficiency
- ✔ Planned preventive maintenance
- ✔ Accurate MIS reporting

## Applications

### COMMERCIAL BUILDINGS

- ✔ Shopping Centers
- ✔ Universities
- ✔ Hospitals
- ✔ Hotels
- ✔ Cold Storage
- ✔ Data Centers

### INDUSTRIES

- ✔ Process Industry
- ✔ Semi-Conductors
- ✔ Pharmaceutical
- ✔ Automotive



### LOAD

- ✔ Power & Energy consumption
- ✔ Power Factor monitoring
- ✔ Load imbalance
- ✔ TOD scheduling



### GRID

- ✔ Power Quality Monitoring
- ✔ Grid Availability



### SOLAR PV PLANTS

- ✔ Roof-top Plants
- ✔ Utility Plants
- ✔ Zero export
- ✔ Diesel Generator Sync



### DIESEL GENERATORS

- ✔ Fuel pilferage
- ✔ Run time analysis
- ✔ Health monitoring



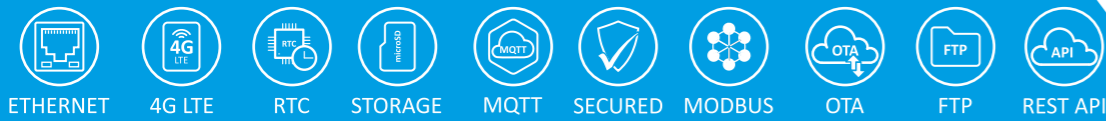
### UPS & BATTERIES

- ✔ Battery health monitoring
- ✔ UPS status monitoring

# Industrial Data-Loggers & Cloud Gateways

Rugged & feature rich industrial gateways provide secure and reliable telemetry with data-logging.

*Never miss a beat in your metrics!*



High availability cloud



Predictive Insights



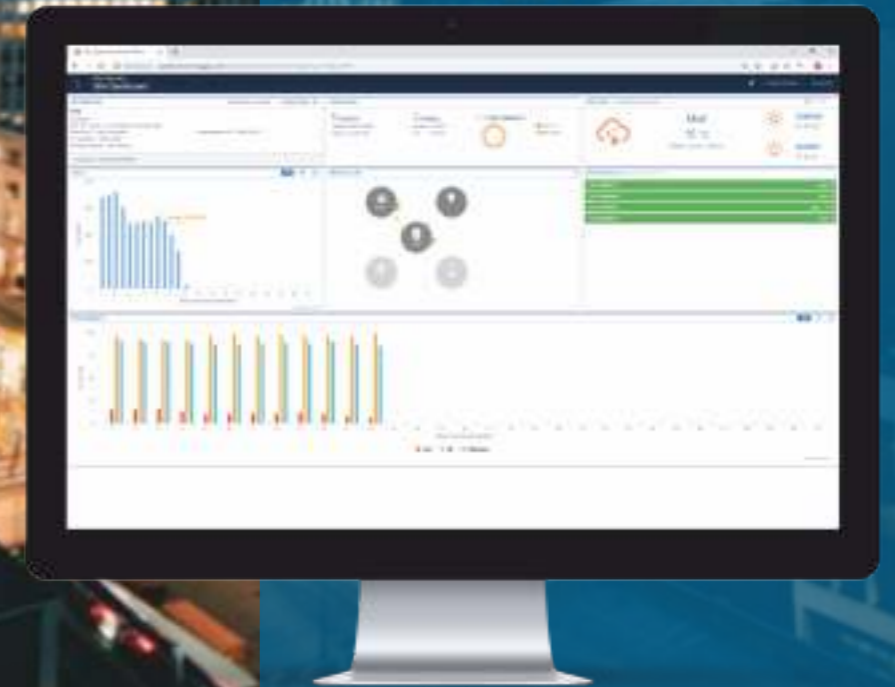
Engaging dashboards



Operational Efficiency

## Cloud Features

- Highly Scalable Cloud
- Engaging dashboards
- Manual & Scheduled reports
- Alerts and notifications
- Real-time formula computations
- Multi-tenancy supported
- Asset Management
- Powerful Device Management
- High Availability
- Role based access management



## M2MLogger at a glance



**1103+**  
INDUSTRIES

**2053+**  
SITES

**2311+**  
IOT NODES

**25K+**  
KPIS

## Some of our delighted Clients:



## Testimonials

“



**PRITESH M. SHAH**  
Chairman, PRIMA Group

We are working with M2M Loggers for around 6 years now, and every step of the way they have developed and provided IoT solutions to meet our Real Time Data Transmission requirement.



**MANAS BABYLONI**  
General Manager (Sales & Strategy), Errand Enterprises Pvt. Ltd.

M2MLogger has helped us service our customers with the latest IoT technology. They have helped us stay ahead of competition by developing new innovative IoT solutions for the industry.



**SURAJ CHAWLA**  
General Manager, NEVCO Engineers Pvt. Ltd.

We were looking for advanced IoT gateways to help us with evolving customer requirements when we evaluated M2MLogger. Their IoT gateways and SAAS cloud platform provided a seamless and integrated solution to our problem. M2MLogger support team helped us to build confidence with our customers and a stronger relationship.



**AVISHEK SINHA**  
Director, Srijan Webmatics Pvt. Ltd.

Struggling with bad experience with existing IoT products, we were referred to M2MLogger. Their equipments integrated easily and are highly maneuverable which made them easy to deploy for targeted monitoring when and where we need it.

”



## **M2MLogger**

An ISO 9001:2015 Certified Company

### **HEAD OFFICE**

Plot 67, Street 1-B,  
Friends Colony Industrial Area,  
Shahdara, Delhi - 110095  
INDIA

Telephone +91 11 41002487

Mobile +91 74280 82286

Email [sales@m2mlogger.com](mailto:sales@m2mlogger.com)

Web [www.m2mlogger.com](http://www.m2mlogger.com)

### **WORKS**

B-8, First Floor  
F.I.E. Patparganj Industrial Area  
Delhi - 110092  
INDIA

